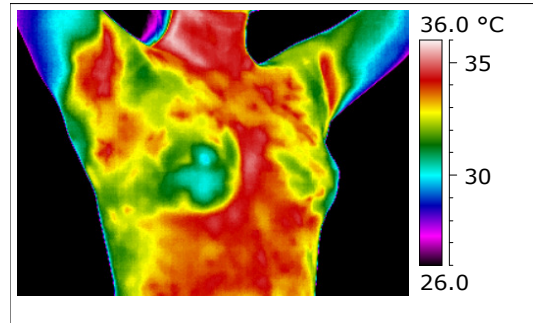
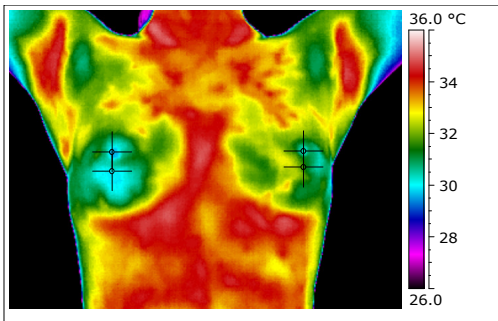


# Breast Thermography – Case Study

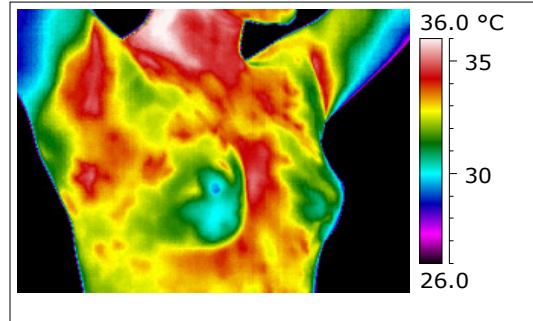
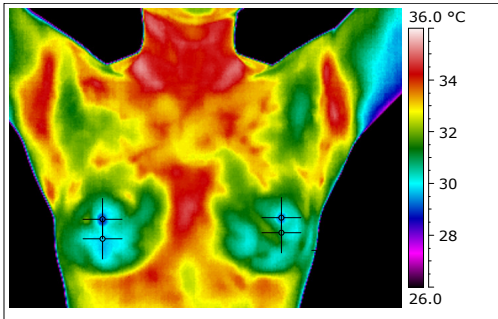
Maria\* - Age 34

Maria took control of her breast health by identifying abnormal changes with thermography and made simple lifestyle adjustments to reverse these abnormalities. Left unchecked, the problem in her left breast may have developed into breast cancer. While a cancer takes 5 – 10 years to grow large enough to be seen on a mammogram, thermography provides an opportunity to monitor early changes in breast health.

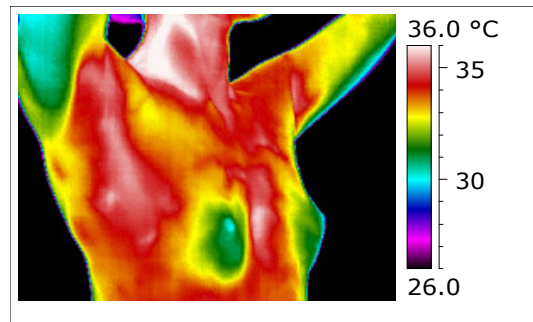
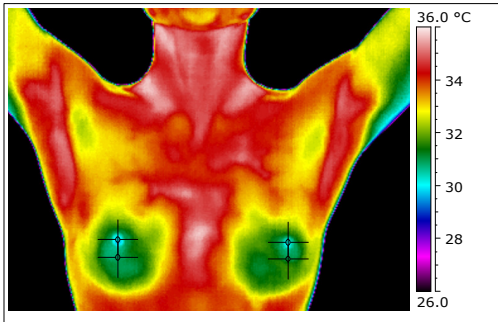
**May 2009** – Right Breast TH1 (25) / Left Breast TH2 (70). Elevated levels in left breast, patient advised to return for 6 month follow up to monitor suspicious activity in left breast.



**August 2009** – Right Breast TH2 (35) / Left Breast TH2 (50), only slightly elevated levels in left breast. Patient made several lifestyle changes, including diet, regular exercise and reducing alcohol intake.



**August 2010** – Right Breast TH2 (35) / Left Breast TH2 (35), very stable results. Activity is no longer seen in left breast, patient continues to observe healthier lifestyle.



\*Name has been changed to protect privacy