

BREAST CANCER
is the most common cancer in women,
and the risk increases with age.

Current research indicates that 1 in every 8
women will develop breast cancer in their lifetime.



BREAST THERMOGRAPHY
An indispensable method of breast assessment
and breast cancer risk evaluation.



Know more about your breast health

The advantage of an early assessment of risk factors could be life-saving. Breast thermography is one of the best early detection systems available today.

Studies have shown that:

- When thermography is added to a woman's regular breast health checkup, a 61% increase in survival rates has been shown.
- An abnormal infrared image is the single-most important marker of high risk for developing breast cancer.
- A persistent abnormal image carries with it a 22 times higher risk of developing future breast cancer.
- When thermography is used as part a multimodal approach (clinical examination, mammography and thermography) 95% of early-stage breast cancers can be detected. For further information on studies about thermography, please visit our website.

Other Infrared Imaging Applications

Identification and monitoring of:

- Inflammatory conditions (arthritis)
- Carpel tunnel syndrome
- Chronic pain
- Complex regional pain syndrome
- Musculoskeletal disorders (fibromyalgia, whiplash)
- Chronic back pain
- Sports Injuries



For further information, or to book an appointment call:

CLINICAL THERMOGRAPHY LTD
Ph 09 522 0020 Fax 09 522 0040
99 Remuera Rd, Auckland 1050, PO Box 99059 Newmarket
info@clinicalthermography.co.nz
www.clinicalthermography.co.nz



BREAST THERMOGRAPHY
a non-contact, radiation-free monitoring
of breast health

**KNOW MORE ABOUT
YOUR BREAST HEALTH**
The freedom to choose



Breast Thermography

Breast thermography is a breakthrough imaging procedure where infrared images of the breast are analysed and rated to determine the risk of developing breast cancer.

Thermography is non-contact, safe and painless – no radiation or compression is used.

The infrared imaging process allows us to see the range and amount of heat or thermal energy emitted from the body.

Structural tests, such as mammograms and ultrasound, rely on finding physical lesions (anatomy), while breast thermography detects asymmetrical blood vessel circulation (physiology) within the breast.

Thermography is based on the scientific premise that before the growth of abnormal cells can occur, an increased blood supply must be circulated to the growth area. Thermography measures the heat generated by the microcirculation of blood in the breast during this process.

Thermography can identify a woman's risk for breast cancer at the very early stage of this process, thus helping the patient and her physician to set preventative measures in place.



Commonly Asked Questions

Is breast thermography safe?

Yes, thermography is a non-invasive, non-contact test. Thermography simply creates a thermal image of the breasts by measuring the heat emitted naturally by the body. Thermography is approved by the FDA for adjunctive diagnostic screening for the detection of breast cancer and has been used in the United States and Europe for over 20 years.

Can thermography diagnose breast cancer?

No. Thermography, like mammography, is a screening tool. Thermography identifies physiological changes in the breasts. Mammography, a type of x-ray, identifies structures in the breast. With both mammography and thermography, definitive diagnosis can only be obtained through other procedures.

How long does it take?

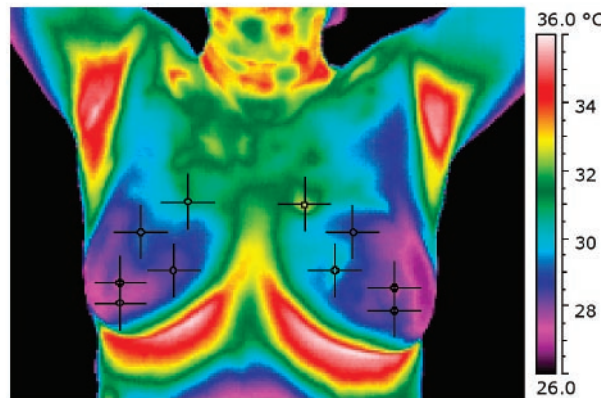
The scan, including the time to acclimatise to the temperature of the procedure room, will take approximately 30 minutes. Once the client has acclimatised, a series of thermal images are taken by our IACT accredited female technician. These images are then assessed by a Board Certified Clinical Thermographer.

Is thermography suitable for breast implants?

Yes – breast implants do not interfere with thermography.

Do I need a referral from my doctor?

No, a referral is not necessary.



Who should have Breast Thermography testing?

- ↳ Women who want to take a pro-active approach to their health find great value in the additional information provided by breast thermography.
- ↳ Women who have had inconclusive mammograms or physical breast examinations find that breast thermography can help to clarify these tests, thus enabling women to better manage their breast health.
- ↳ Women with dense or fibrocystic breasts, where mammography is of little value, will benefit from thermographic monitoring.
- ↳ Breast thermography can be safely performed on young women.
- ↳ In addition, early breast exams can provide a valuable baseline from which to measure future breast health and potential risk factors.

